

COMPANY
PROFILE

bac-engineering.com

BAC
ENGINEERING
SERVICES LTD

PROVIDE CAPABLE &
QUALIFIED PROFESSIONALS
ON EVERY PROJECT

WELL COORDINATED TEAM WORK SPEAKS ABOUT US

Celebrating over 20 years in service, Butnam Aviation Consultants (BAC) Engineering Services Limited was established in 1995 with an emphasis on the aviation industry but has, over the years, seen a steady expansion into other professional fields of consultancy. BAC is fully owned by Kenyan nationals and is currently registered and incorporated under the Companies Act (Cap 486) of the Republic of Kenya.

The firm is recognized in the industry for offering responsive cutting edge consultancy services on both national and international projects. BAC has created a niche in the industry for focusing on being pro-active in every project and placing emphasis on the clients' needs as its primary priority.

BAC is a registered Consulting Firm with the Engineers Board of Kenya. Registration No. ECF146

Former Chief Engineer and General Manager (Engineering Services) at Kenya Airports Authority, Eng. Okumu with over 40 years' experience in engineering, planning, facilities specification, design and maintenance facilities.

Having founded BAC with the aim to be recognized as a premier multifaceted engineering consultancy business services partner in 1995, he has taken overall direction of numerous Engineering, Transport and Environmental projects related to infrastructure. In this capacity he has been responsible for assisting in the formulation and implementation of numerous diverse projects office procedures, organizing projects programs and execution of new and specialist projects.

MESSAGE FROM THE EXECUTIVE DIRECTOR

BAC aims to be recognized as a premier multifaceted engineering consultancy business services partner. We strive to provide our clients with quality, high calibre, innovative solutions by embodying standards of excellence. . We pride ourselves on the professionalism, quality and the depth of expertise in our work. Fostering strong relationships with our clients across private industries and governmental sectors, we are able to qualify the aspirations of all our clients. Through team work and robust management structures, we at BAC aims to be recognized as the premier multifaceted engineering consultancy business services partner are committed to continual improvement towards world class consulting services, as well as being socially responsible to the environment in which we live and work.

RECOGNIZED FOR OFFERING CUTTING EDGE MULTI – DISCIPLINARY CONSULTANCY SERVICES

BAC MAIN FIELD OF ACTIVITIES INCLUDE:

Pre-investment studies, economic appraisal of projects infrastructures and regional transportation systems planning.

Technical and economic feasibility studies of projects.

Project planning, formulation and development briefs.

Planning, appraisal and design of facilities and buildings including electro-mechanical systems.

Engineering design, tender documentation preparation, tender evaluation administration and supervision.

Environmental and Social Management; including Environmental and Social Impact Assessments, Environmental Audits and Environmental Scoping and Management.

Socio-Economic Studies including Resettlement Action Plans and Compensation Action Plans.

Road and pavement maintenance management systems.

BAC is able to provide its services across all sectors including on an individual basis, for businesses and corporations and local, national and international arenas and governmental projects.

OUR PRINCIPLES & CORE VALUES

Use of cutting edge and current technologies to find solutions.

To continually expand our knowledge and technical services to meet world recognized benchmarks in the industry.

CONTINUOUS LEARNING

HONESTY & INTEGRITY

Behave in a morally astute and ethical manner at all times.

Foster open, fair and honest relationships, based on mutual trust and with integrity.

Value diversity, assuring equal employment opportunities and safe working conditions;

Provide competitive terms and conditions.

Foster good employee relationships and loyalty.

EMPLOYEES

To comprehensively understand the needs & expectations of our clients.

To remain committed to client schedules.

To satisfy all aspects of client requirements within the finished design.

CLIENT COMMITMENT & SATISFACTION

QUALITY ENGINEERING & CONSULTANCY

To strive to provide the highest professional standards across all business functions.

To apply robust project planning/management techniques to meet goals and targets.

To provide competent, experienced & qualified professionals on every project

Application of innovative solutions in order to meet the requirements of the client.

TECHNICAL INNOVATION

OUR PRINCIPLES & CORE VALUES

CREATED A NICHE IN THE INDUSTRY FOR FOCUSING ON BEING PRO- ACTIVE IN EVERY PROJECT

OUR MISSION

BAC is committed to its mission of providing bespoke high quality Engineering and Environmental consultancy services. We seek to do this by promoting our philosophy of excellence through employing individuals whose professionalism, experience, approach to quality, development and empowerment supports in providing our clients with cutting edge, timely and robust services. By ensuring clients achieve their objectives within the desired timeframe, at competitive rates and to industry defining standards, BAC aims to meet, if not surpass, their expectations through its innovative expertise and technical capability

OUR VISION

To be recognized as the premier multifaceted Engineering consultancy business services partner, offering innovative solutions and services to complement the needs of our clients, whilst acting with responsibility, integrity and mutual respect to our employees, stakeholders and to the community who constitute the environment in which we live and work.

BAC is committed to ensuring customer satisfaction by consistently providing Engineering, Project Management and Environmental Services which conforms to customer requirements.

BAC SHALL ENSURE THAT THE ABOVE IS ACHIEVED BY:

All members of staff fully understanding and supporting the firm's approach to quality.

Its understanding of the internal and external issues relevant to the company and its strategic direction which can affect the Quality Management Systems ability to achieve the intended results.

Establishing departmental quality objectives which are used to achieve BAC's quality intentions and also drive improvement.

Ensuring that we comply with the applicable regulatory, statutory and quality management system requirements and continually improve the systems effectiveness.

Determining organizational risks, opportunities and mitigation measures to prevent potential process risks and safe guard the Quality Management Systems capabilities and

Determining interested parties who are relevant to our Quality Management System and their requirements, as well as provide access to our Quality Policy to the relevant interested parties.

This Quality Policy Statement and corresponding quality objectives shall be reviewed at least once a year to take into account changing quality management systems and practices for continuing suitability and effectiveness.

TRANSPORT ENGINEERING

Our transport engineering department combines expertise and experience to handle projects that involve the planning, design of highways, roads and other vehicular facilities/ infrastructure and their related realms. This department uses current and robust models and principles to forecast and implement project in the transport industry.

We also have an understanding in harbor and port engineering having been awarded project involving feasibility studies, environmental impact assessment and dredging consultancies at the port of Mombasa, Kenya.

BAC HAS STAFF WITH EXPERIENCE IN THE DIVERSE TRANSPORTATION PROJECTS:

Rural and Urban Roads

Rural and Urban Highways

Parking Facilities and Road Junctions

Port Channel Dredging

OUR SERVICES EMBRACE ALL ASPECTS OF TRANSPORTATION DESIGN:

Traffic Engineering Studies

Road Audits

Feasibility Studies

Traffic data collection analysis & Production

The transportation engineering department tries to offer all transport related services under "one-roof" to enable us deliver a broad range of knowledge and data to each product. We also have, over the years, developed a professional understanding and working relationship with clients, including Ministry of Transport and some of its related parastatals to understand industry protocol and in-house procedures. This allows the team to offer quality and timely services to the client.

CIVIL ENGINEERING & HIGHWAYS

We provide integrated engineering consultancy services in planning, design and supervision of construction of infrastructure services for site and services schemes, residential estates, commercial and industrial developments, education and research institutions.

For residential, commercial, industrial, educational and research developments, the department provides engineering services in the planning and design for provision of access and estate roads, storm drainage, foul drainage, water reticulation electrical power supply and distribution and street lighting.

Under highways, we undertake planning, geometric design, pavement design, drainage design, road furniture design on all types of roads. Our services in this department incorporate modern techniques with latest software technology in the detailed design of roads. We mainly use the Ministry of Roads (Kenya) Roads, British Standards and AASHTO road design manuals.

PROJECT MANAGEMENT

Our capable and experienced staff also offers project management services. We are able to combine principles of time management, man-management and external factors in order to help realize targets, particularly in construction supervision.

Project management allows clients/projects to maintain objectives within the timescale and within the allocated budget. We use the triple constraint principle; time, scope and cost, which is also referred to as the Project Management Triangle.

ENVIRONMENTAL MANAGEMENT

BAC Engineering Services Ltd recognizes the importance of environmental management as a key component of sustainable development. This has created an ever-growing need for environmental consultancy both locally, regionally and internationally and we have, over the last 10 years, provided environmental management services.

These services include Environmental Impact Assessments, Environmental Audits, Environmental Scoping, Environmental Management Systems, Pollution Prevention and Contaminated Land Management.

All services are done in line, but not limited to the Environmental Management and Coordination Act 1999, Government of Kenya.

SOCIAL ECONOMIC STUDIES

Social economic Studies and surveys are integral in the field of engineering. BAC has socio-economist experts that oversee the execution of Resettlement Action Plans, Compensation Action Plans and HIV-AIDS Prevention Programs.

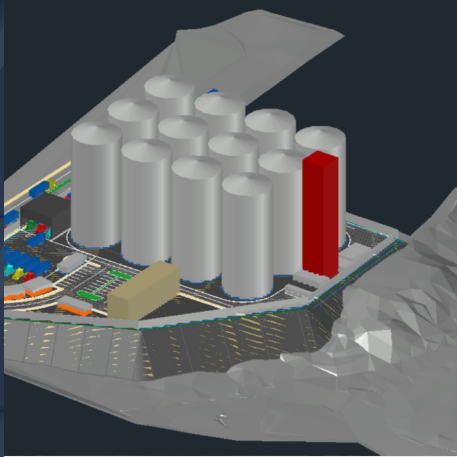
WATER RESOURCE

BAC Engineering Services Ltd is also experienced in the field of water resource. We have provided the following services:

Water Resource Management.

Irrigation.

Water Engineering (Supply & Distribution Systems).



Design and Tender Assistance of a Second Grain Handling Facility at the Port of Mombasa

Location: Kenya

Client: Heartland Terminals Ltd

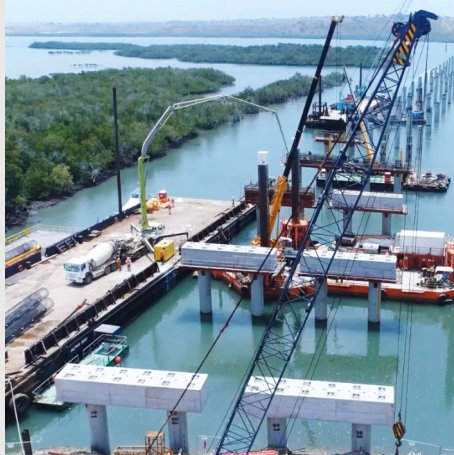
Basic Design . Detailed Design Natural Conditions Survey . Survey . ESIA Study Tender Assistance

Detailed Design, Tender Documentation and Assistance and Construction Supervision of the Mombasa Southern By-Pass and Kipevu New Container Terminal Link Road

Location: Kenya

Client: Kenya National Highways Authority

Basic Design . Detailed Design . Tender Assistance . Environmental Management . Construction Supervision



Consultancy Services for Tender Assistance and Construction Supervision of the Mombasa Gate Bridge Project

Location: Kenya

Client: Kenya National Highways Authority

Basic Design . Detailed Design . Natural Conditions Survey . Survey Tender Assistance . Construction Supervision

Consulting Services for Tender Assistance and Construction Supervision of Mombasa Special Economic Zone Development Project, Port Sub-Project

Location: Kenya

Client: Kenya Ports Authority

Basic Design . Detailed Design . Natural Conditions Survey . Survey Tender Assistance . Construction Supervision



Design and Construction Supervision of New Container Terminal, Port of Mombasa and Associated Infrastructure – Phase II (Berth 22) 2008-2012

Location: Kenya

Client: Kenya Ports Authority

Basic Design . Detailed Design .
Natural Conditions Survey .
Environmental Management . Tender
Assistance . Construction Supervision

Detailed Design, Tender Documentation and Assistance and Construction Supervision of the Mombasa Southern By-Pass and Kipevu New Container Terminal Link Road

Location: Kenya

Client: Kenya National Highways Authority

Basic Design . Detail Design Survey/
Studies . Tender Prep Supervision



Consultancy Services for a Feasibility Study, Environmental Impact Assessment, Social Impact Assessment & Preparation of a Resettlement Action Plan of the Construction of the Mombasa Northern ByPass

Location: Kenya

Client: Kenya National Highways Authority

Basic Design . Detailed Design Natural
Conditions Survey . Survey/ Studies
ESIA & RAP Study . Tender Assistance



Consultancy Services (Detailed Design and Construction Supervision) for Mombasa Port Development Project – Phase I (Berth 20 & 21)

Location: Kenya

Client: Kenya Ports Authority

Basic Design . Detailed Design
Natural Conditions Survey
Environmental Management . Tender
Assistance . Construction Supervision





Feasibility Study for Lamu Port – Southern Sudan – Ethiopian Corridor. Master Plan for Lamu Port including Detailed Design of the First Three Berths & Associated Infrastructure

Location: Kenya

Client: Ministry of Transport

Feasibility Studies . Master Planning
Natural Conditions Survey . ESIA Study
First Three Berths, Lamu Port: Basic
Design Detailed Design . Tender
Assistance

Consultancy for Dredging and Hydrographic Works

Location: Kenya

Client: Kenya Ports Authority

Dredging Design . Natural Conditions
Survey (Bathymetric, Hydrography,
Geotechnical) . ESIA and RAP Study
Tender Assistance . Dredging
Supervision



Consultancy Services for Geotechnical Investigations, Berths 11 to 14, Port of Mombasa

Location: Kenya

Client: Kenya Ports Authority

Detail Design . Survey/Studies

Detailed Design of Air Control Tower, Malindi Airport

Location: Kenya

Client: Kenya Civil Aviation Authority

Basic Design . Detail Design . Survey/Studies . Tender Prep . Supervision

A109: Mtito Andei to Bachuma Gate –Audit

Location: Kenya

Client: Ministry of Roads

Survey/Studies . Environmental

Special Assistance for Project Formation Study, Port of Mombasa

Location: Kenya

Client: Kenya Ports Authority

Survey/Studies . Environmental

OUR PROJECTS ON
VARIOUS VERTICALS

BAC Engineering Services Ltd

Nairobi (Head Office)

Suite 26 2nd Floor

The Greenhouse

Ngong Road Nairobi

P.O Box 61231 00200 Nairobi . Kenya

Mobile: +254 707 312 205 | +254 735 246 213

Mombasa

5th Floor, BP Plaza

Umoja Road Mombasa . Kenya

+254 792 152 735

info@bac-engineering.com

www.bac-engineering.com